

## *Venus R series*



## *Ultra-wide Industrial Printer*

Venus R series independently developed by JHF is another masterpiece in the field of ultra wide industrial printers, which integrates intelligence, speed, accuracy and stability. Venus R series is equipped with a double row ten color outputs system to realize photo-realistic output. Wide format 5m and multi-rolls printing kit can effectively improve production efficiency and easily cope with various applications scenarios, all in one design to save the cost. Meanwhile, Venus R series introduces industrial PLC and automatic integrated operation, cancels operation buttons on the machine body, and the printing task control can be completed on the console. The whole machine does not need personnel to guard, realizing unmanned intelligent printing in the whole process. Venus R series will re-establish professional and high-quality product standards and promote ads market to a new height.

# Vivid colors with a double-row, ten-color setup

## Bolder and imaginative colors

Featuring a carriage plate with 20 printheads, allowing for versatile applications and offers a variety of application solutions, including white and color multi-layer printing. With this setup, production is made both efficient and convenient, while ensuring full compliance with color requirements.

## 5-Meter Ultra-Wide Format Printing

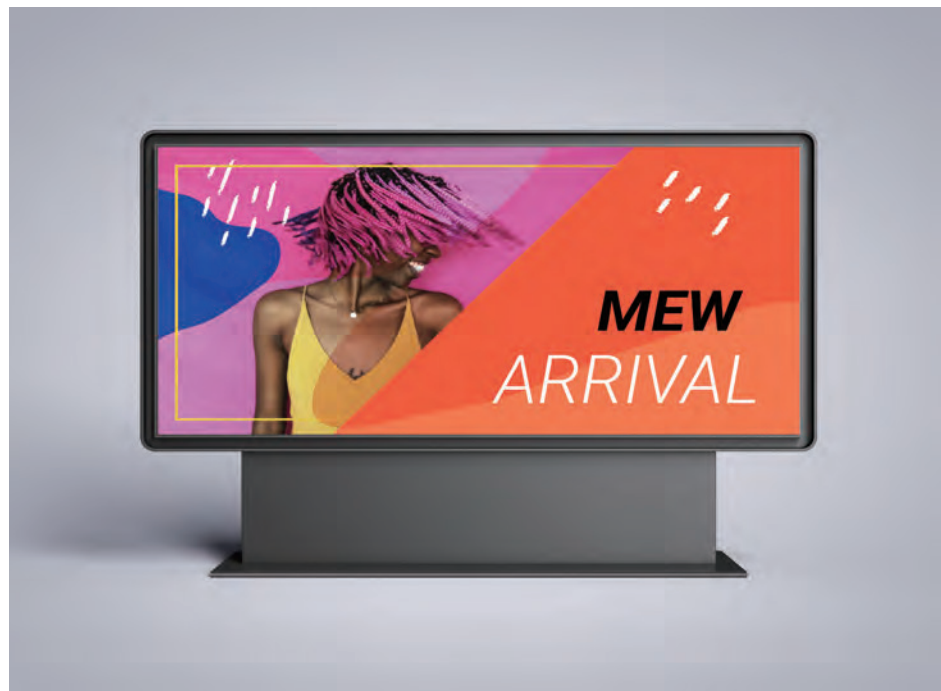


## High quality output

0.5μ high-precision metal encoder strip and maglev system perfectly ensures the ultra-high printing accuracy when printing at high speed. It benefits to improve production efficiency and output quality.

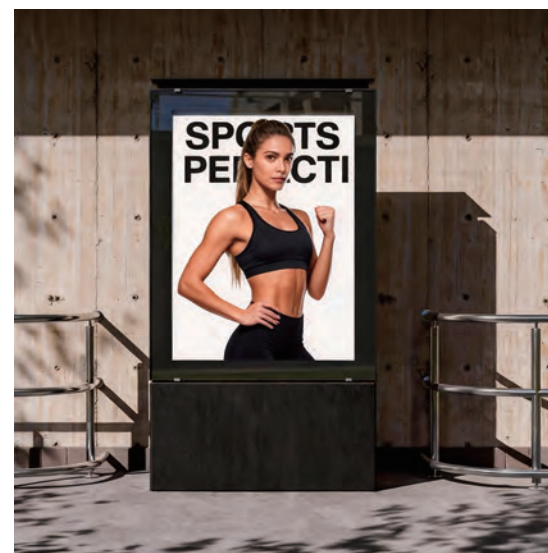
## Superior expressive force

Configured with double row ten color, it can easily meet customers' high-quality printing requirements for advertising pictures and large billboards.



## Flexible Production

With 5-meter ultra-wide format printing, the flexible production mode allows for the simultaneous printing of three 1.6-meter-wide material rolls, improving production efficiency.



# Learn more about Venus R series

## Core technology

### Superior performance operation

- The flexible production mode can realize the synchronous printing of three rolls of 1.6m wide materials.
- The customized feeding system and the roller structure make the printing materials run more accurately and smoothly, not easy to deviate, and more suitable for high-speed printing in large quantities.
- The ink temperature control system independently developed greatly improves the smoothness of ink and the printing stability.
- The negative pressure platform managed by frequency conversion to ensure the stability of the negative pressure and effectively prevent the wrinkle of the feeding.

### Ultra high output quality

- 5m wide format, double row ten color output system, all succeed in photo-realistic output.
  - 0.5 $\mu$  high-precision metal encoder strip and maglev system perfectly ensures high printing accuracy during high-speed printing.
  - It offers a variety of application solutions, including white and color multi-layer printing. An optional "Double-Sided Vision Alignment System" is available to achieve precise alignment for double-sided printing.
- Equipped with a highly efficient, fully automatic UV curing system, the image can be printed and dried instantly and featured with waterproof, sunproof and scratch resistant, which is more energy-saving and environmental friendly, and has higher definition, brightness and color saturation.

### Intelligent module

- Venus R series is highly intelligent industrial digital equipment with big potential for further system upgrading, effectively saving labor costs.
- Double sided intelligent printing function, the printing position can be found more accurately by scanning through the camera.
- Intelligent cutting function, which can synchronize to cut the picture vertically into multiple parts during the machine working.
- Automatic boundary detective function, multi roll material can realize intelligent typesetting and synchronous printing to increase the production capacity of the machine.
- Anti-Collision System and Printhead Lift and Protection System, combined with automatic height measurement technology, which greatly reduces the deviation and error caused by manual operation, and the anti-collision induction system better protects the heads and UV lamp.
- Stable high-precision electronic negative pressure system to ensure stable and smooth ink supply; also equipped with negative pressure protection and feedback, which can prevent ink from back flowing.
- The front guardrail uses dark gray plexiglass shielding to prevent UV damage to the human body.

五米十色 定义行业新标准



# Technical Specifications

VENUS R SERIES	3200 series	3200 series	5000 series	5000 series
Curing system	LED UV	Mercury UV	LED UV	Mercury UV
Model	3204: CMYK 3206: CMYK LcLm 3208W: CMYK LcLmWW	3204: CMYK 3244HS: CMYK CMYK	5004: CMYK 5006: CMYK LcLm 5008W: CMYK LcLmWW 5044HS: CMYK CMYK	5004: CMYK 5044HS: CMYK CMYK
Printhead drop volume	Greyscale, 3.5 pl – 14 pl			
Printing technology	Piezoelectric drop-on-demand inkjet			
Resolution	Up to 1200 x 1200 dpi			
Inks	AU series	GS series	AU series	GS series
Maximum throughput	400 m <sup>2</sup> /hr		667 m <sup>2</sup> /hr	
Maximum media width	3.40 m		5.13 m	
Maximum media thickness	2.0 mm			
Minimum media thickness	0.1 mm			
Maximum print image width	3.20 m		5.00 m	
Media loading capabilities	Large rolls: 400 kg x 400 mm Multi-rolls: 2 x 200 kg x 340 mm		Large rolls: 600 kg x 400 mm Multi-rolls: 3 x 200 kg x 340 mm	
Hardware interface	Ethernet TCP/IP, 1000 base-T			
Power requirements	LED UV: 380-400V, 50/60 Hz, 3P+N+E, 30A, peak power 15kW Mercury UV: 380-400V, 50/60 Hz, 3P+N+E, 30A, peak power 21kW			
Air supply	Pressure (minimum): 8 kg/cm <sup>2</sup> (7.85 bar / 114 psi) Flow rate (minimum): 1.2 m <sup>3</sup> /min (1200 l/min / 42.26 cfm)			
Environmental conditions	Temperature: 18°C – 28°C Humidity: 40% – 80% RH (non-condensing) Atmospheric dust: ≤0.15 mg/m <sup>3</sup>			
Dimensions (L x W x H) (excluding workstation)	6.81 m x 1.81 m x 2.04 m		8.5 m x 1.88 m x 2.21 m	
Machine weight	4750 kg		7740 kg	



For further information, please contact local partner Website: [www.gandydigital.com](http://www.gandydigital.com) Specifications are subject to change without prior notice. All rights reserved.

## one brand solutions

☎ T:+32 2 42 04 129  
M:+32 484 142 282  
✉ [sales@1brandsolutions.be](mailto:sales@1brandsolutions.be)  
📍 Leuvensesteenweg 510, Building 11  
1930 Zaventem, Belgium