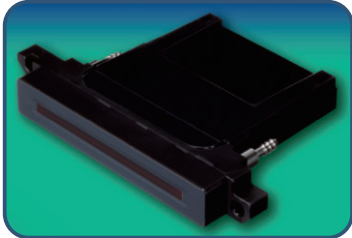
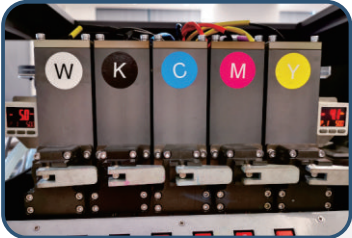


# 1BS-3200LED Pro

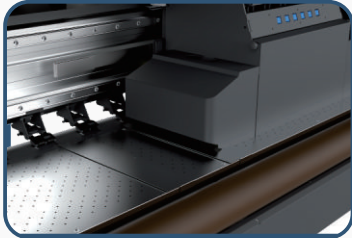
## High Speed 3.2m RTR LED Cure Printer



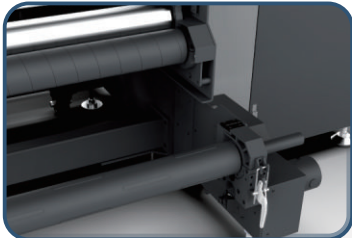
KM 1024i/1024a Printheads



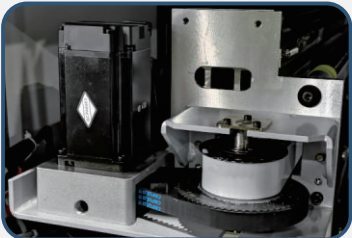
Negative Pressure System



LED UV lamp & Anti-collision Unit



Triple Pinch Rolls Take-Up



Durable 400W AC Servo System



Water Cooling Platen

# Specifications

Model	1BS-3200LEDPro			
Print Head	4-11 KM1024a/1024i			
Head Configuration	2*KCMY, 2*W + 2*KCMY W + 2*KCMY + V, 2*W + 2*KCMY + V			
Curing System	LED UV Curing System			
Ink Type	UV Curable Ink			
Color Configuration	KCMY + W + V			
Ink Supply System	Negative Pressure System + White Ink Re-circulation System			
Servo System	Durable 400w AC servo system			
Media Handling System	Pinch Roller System with Multi-function Feeder + Triple Pinch Take-Up Roller			
Media Type	Backlit, Banner, Canvas, Backlit Film, Reflective Film, Tarpaulin, Backlit Textile, Vynil, Wall Coverings, PP, PET			
Printing Width	Max. 3200mm			
Printing Speed	KM1024i	Resolution	1 Group	2 Gr0ups
	Draft	480x 1080dpi	39m <sup>2</sup> /h	72m <sup>2</sup> /h
	Production	480 x 1440dpi	31m <sup>2</sup> /h	58m <sup>2</sup> /h
	Quality	480 x 1080dpi	21m <sup>2</sup> /h	40m <sup>2</sup> /h
	Hi-Precision	480 x 1440dpi	15.2m <sup>2</sup> /h	30m <sup>2</sup> /h
	KM1024i	Resolution	1 Group	2 Gr0ups
	Draft	540 x 1080dpi	36.5m <sup>2</sup> /h	67.5m <sup>2</sup> /h
	Production	540 x 1440dpi	28.6m <sup>2</sup> /h	53.5m <sup>2</sup> /h
	Quality	540 x 1080dpi	19.4m <sup>2</sup> /h	37m <sup>2</sup> /h
	Hi-Precision	540 x 1440dpi	14.4m <sup>2</sup> /h	28.5m <sup>2</sup> /h
Data Inteface	External: USB2.0, Internal: SCSI cable			
Working Environment	Tempearature: 20C, Humidity: 40%-70%			
Software	FlexiPrint UV Edition(Onyx Optional) + Printer Manager			
Power	Printer: Single Phase 50/60Hz,220Vac, 10A / Regulator: 10Kva			
Printer Dimensions / Crated	5200 x 1372x1606mm/5340 x 1330 x 1840mm(Printer), 680 x 290 x 480mm/750 x 450 x 670mm(UV Controller)			
Net Weight/Gross Weight	1466Kg/1699Kg(Printer), 19Kg/38Kg(UV Controller)			

Specifications are reliable to change without prior notice. The printing speeds are measured in 3200mm width printing.